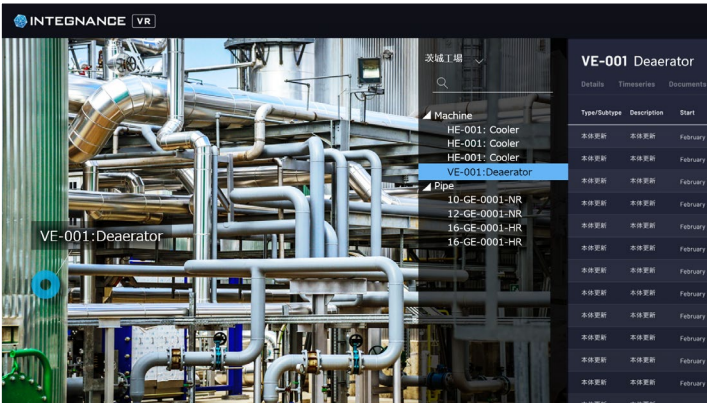
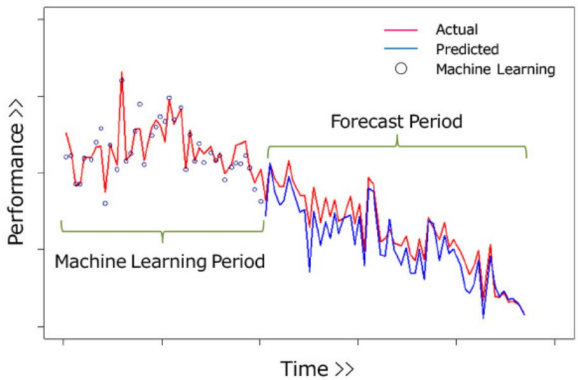


# Smart O&M Solutions

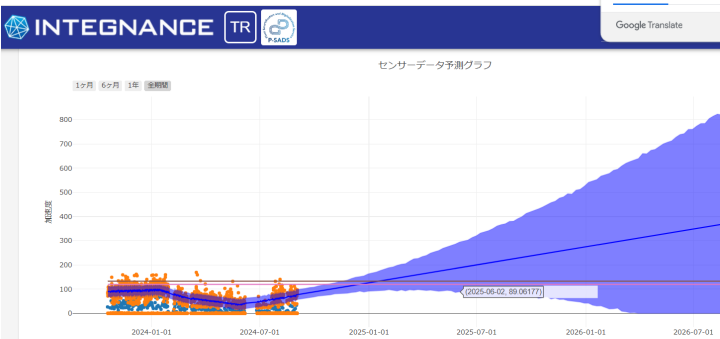
JGC has developed digital solutions utilizing its extensive knowledge and experience from long-term O&M support to achieve work efficiency, sustainable technical transitions, and less manned operations. Additionally, cutting-edge digital twin technologies accelerate the transition of your conventional operation and maintenance to the next stage.



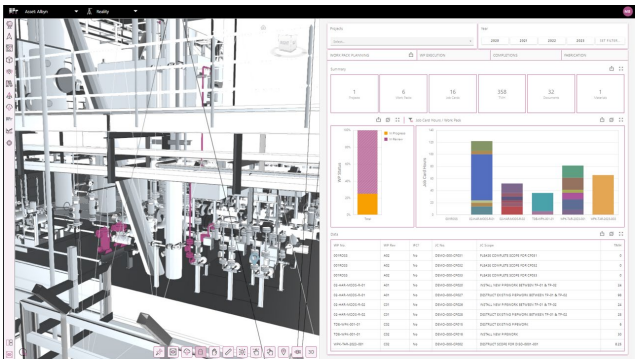
Fast Digital Twin Maintenance Viewer



Plant Smartification  
AI Analysis for Catalyst Deterioration



Predicting Failure of Rotating Machinery



MODS Connect

## Service Menu

Return to  
OE Service menu

### ◆ Maintenance Digital Twins Program

INTEGNANCE VR  
(Fast Digital Twin Maintenance Viewer)

### ◆ Smart Turnaround Management Program

MODS - Connect

### ◆ Plant Smartification Program

INTEGNANCE TR  
(Predicting Failure of Rotating Machinery)

Plant Smartification with AI Technology

Remote Monitoring and Assistance



# Operational Excellence Services

## Smart O&M Solutions INTEGNANCE VR Fast Digital Twin Maintenance Viewer



### Contact Us

 [Technology Inquiries | Contact Us | JGC HOLDINGS CORPORATION](#)

### Access to Our Homepage

 <https://www.jgc.com/en/business/epc/operation-maintanance/service/>

# INTEGNANCE VR-Fast Digital Twin Maintenance Viewer

## Do you have any of these issues?

- ☹️ **Struggling with promoting DX to aging plant which doesn't have 3D model**
- ☹️ **Wasting time on Site Visit for repair work planning, inspection planning, and daily maintenance work planning**
- ☹️ **Outdated or missing blueprints**

## Our Solutions

- Our “Fast Digital Twin” replicates your plant as 3D model within 3 days at the earliest
- Without going to the site, maintenance planning can be developed via web
- Direct recording into a 3D model with tablets on-site is an efficient way to share site data without the need for blueprints



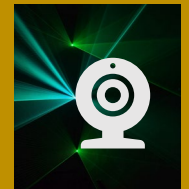
## 3D scanning



Wearable 3D Imaging Scanner



Drone



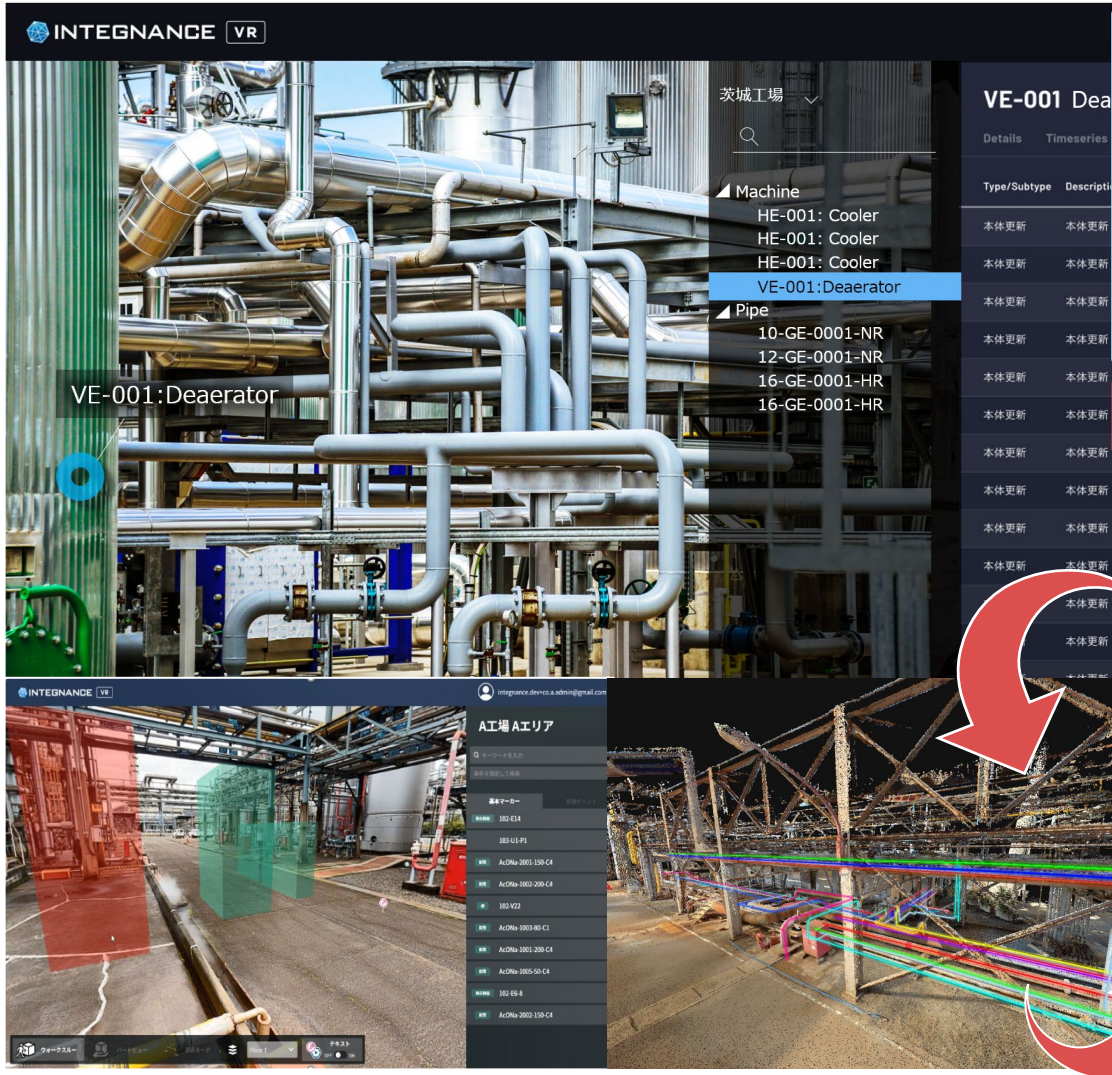
Imaging Laser Scanner

(\*)INTEGNANCE VR is developed by Brownreverse which is one of JGC group companies.



# INTEGNANCE VR-Fast Digital Twin Maintenance Viewer

## Key Features



## 3D Simulation

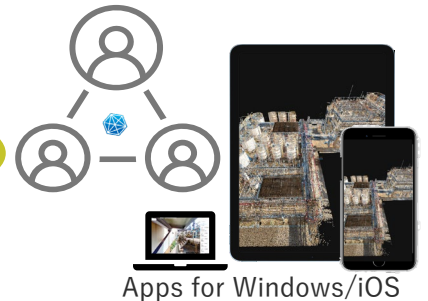
Planning of scaffolding area, Checking of material delivery routes, complicated construction, etc.

# Desktop Survey

Measure the length between two points on the display without reading the drawing or measuring the actual length in the site.

## Anytime Anywhere Access

- No special hardware required.
- Easy sharing thru URL.
- collaborative editing by multiple users.



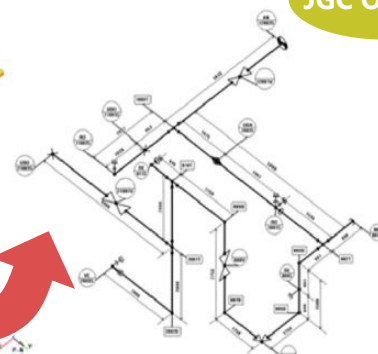
# Automatic Piping Recognition

## Mapping of corrosive loops and corrosion /damage focus areas on 360 panorama image

**JGC Original**

## Automatic Isometric Output

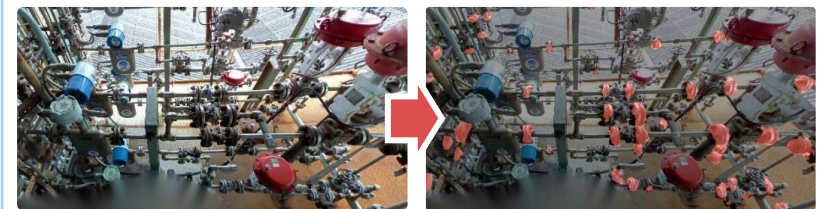
**JGC Original**



## Automatic Flange/Valve Detection

**JGC Original**

Auto detection of flanges/valves positions from 360 panorama image by utilizing AI machine learning technology



# INTEGNANCE VR-Fast Digital Twin Maintenance Viewer

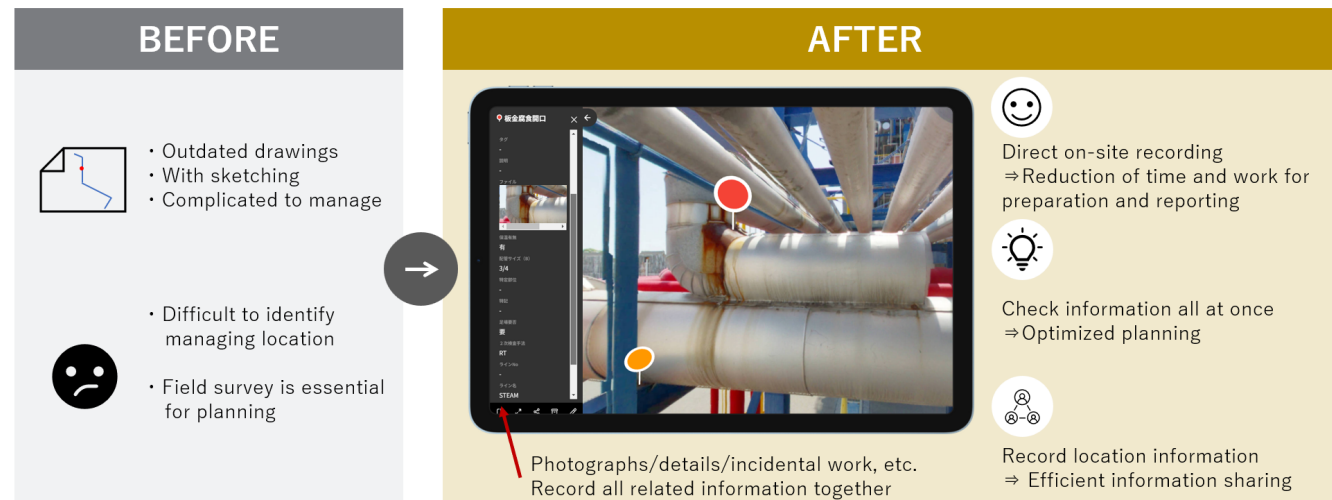
Return to  
Smart O&M  
Solutions menu

## Use Case

Direct recording of 3D model into tablets on-site saves 22,500hr from 50,000hr annually. (45% reduction\*)

## System Integration

Integrating data infrastructures\* with WEB API makes it easier to reference and update related information on INTEGNANCE VR.



\*5,000 cases annually

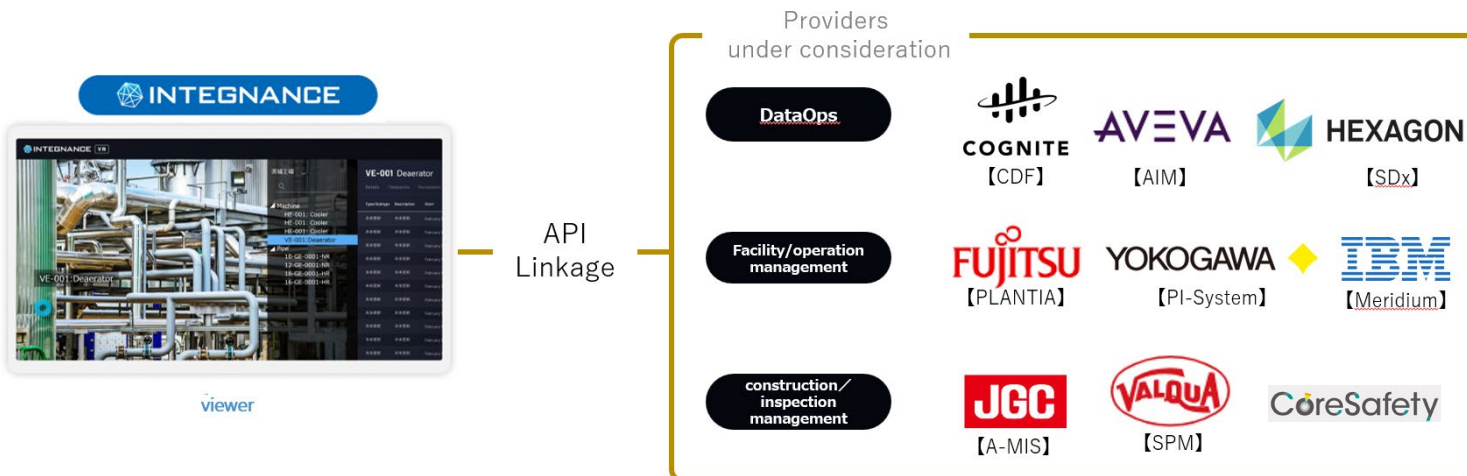
## Our Experiences

### Over 50 Sites

INTEGNANCE VR has been adopted to over 50 sites.

#### Recent news:

INTEGNANCE VR was adopted for an ammonia production base in Indonesia for a joint study on reducing GHG emissions.(Sep 2024)



\*PoC with various providers is being implemented and discussed based on requests from clients.





# Operational Excellence Services

**Smart O&M Solutions**  
**MODS Connect**  
**Smart Turnaround Management**



## Contact Us

➡ [Technology Inquiries | Contact Us | JGC HOLDINGS CORPORATION](#)

## Access to Our Homepage

➡ <https://www.jgc.com/en/business/epc/operation-maintenance/service/>

## Access to MODS Connect

➡ [Industrial Construction Management Software | MODS Connect | MODS](#)

# MODS Connect-Smart Turnaround Management

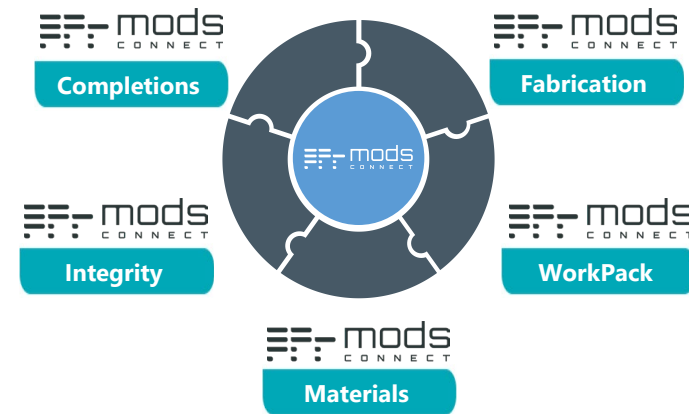
## Do you have any of these issues?

- Desire efficient information sharing and status update with digital tools during turnaround
- Struggling with transitioning to paperless work management
- Need to optimize the turnaround plan effectively

## Concept of MODS Connect for Turnaround

- A cloud-based solution that digitalizes, visualizes and automates Turnaround Project workflows, MODS Connect simplifies processes, improves safety, optimizes cost and time efficiencies.
- It enables remote collaboration and information sharing to help users make best decisions every day from turnaround planning to execution.

As flexible as comprehensive MODS Connect ecosystem includes 5 intelligent modules that connect in any combination.



### > Completions

Facilitate a controlled, staged transfer of responsibility under each discipline via an intelligent centralized database.

### > Integrity

Provide the digital intelligence to ensure leak-free startup, process safety and major hazard avoidance.

### > Materials

Intelligent inventory control of materials, equipment and components to ensure delivery on time, in sequence and to the correct location.

### > Fabrication

Intelligently track components throughout the upstream fabrication process to provide transparency, traceability and reliable supply-chain control.

### > WorkPack

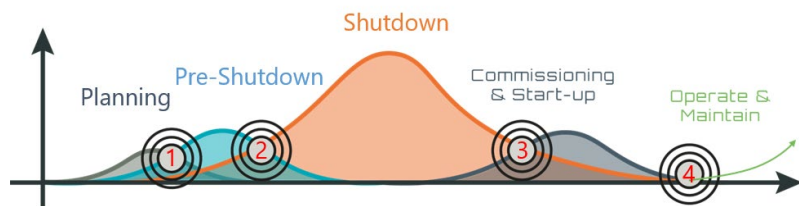
Go paperless with digital work packs for more intelligent, transparent and accountable project execution

# MODS Connect-Smart Turnaround Management

Return to  
Smart O&M  
Solutions menu

## Seamless Turnaround Management

MODS Connect achieves seamless interface management during turnaround activities



### > 1.Planning to Pre-Shutdown

Manage the pre-shutdown work by assessing risks, scheduling tasks, and preparing resources based on the accumulate past experiences and knowledge in the database.

### > 2.Pre-Shutdown to Shutdown

Assign successors and predecessors to define the path of shutdown work, identify execution requirements to allow constraint management

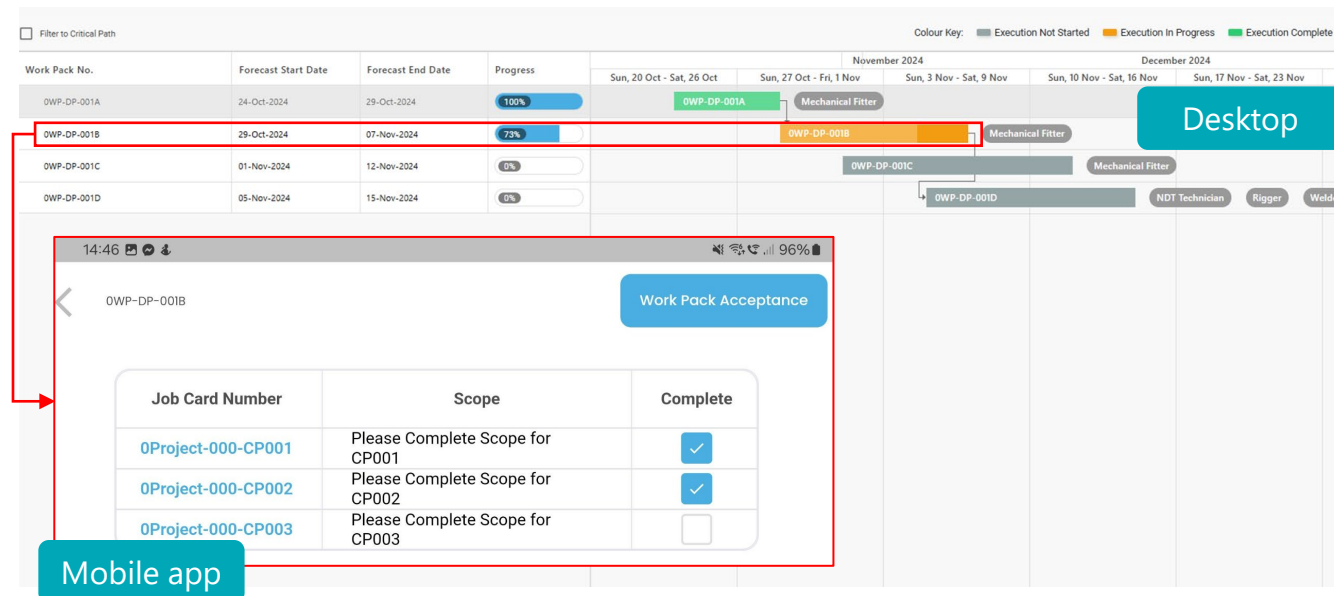
### > 3.Shutdown to Start-up

Monitor shutdown work progress utilizing mobile devices, complete installation and quality records on mobile technology to provide real time tracking.

Visualize shutdown to commissioning handover.

### > 4.Handover

Provide Realtime handover acceptance for operational hand over and stable operations



Gantt chart monitoring and managing of activities on desktop and mobile app

## Client's Benefits

- Reduces costs, for example, by reducing time spent searching for data by ~50%.
- Improves safety through transparent, streamlined workflows to minimize risk and increase the awareness of teams.
- Streamlines complex processes and maximizes resource utilization and efficiency.





# Operational Excellence Services

## Smart O&M Solutions

### INTEGNANCE TR

### Predicting Failure of Rotating Machinery



#### Contact Us

 [Technology Inquiries | Contact Us | JGC HOLDINGS CORPORATION](#)

#### Access to Our Homepage

 <https://www.jgc.com/en/business/epc/operation-maintenance/service/>

# INTEGNANCE TR-Predicting Failure of Rotating Machinery

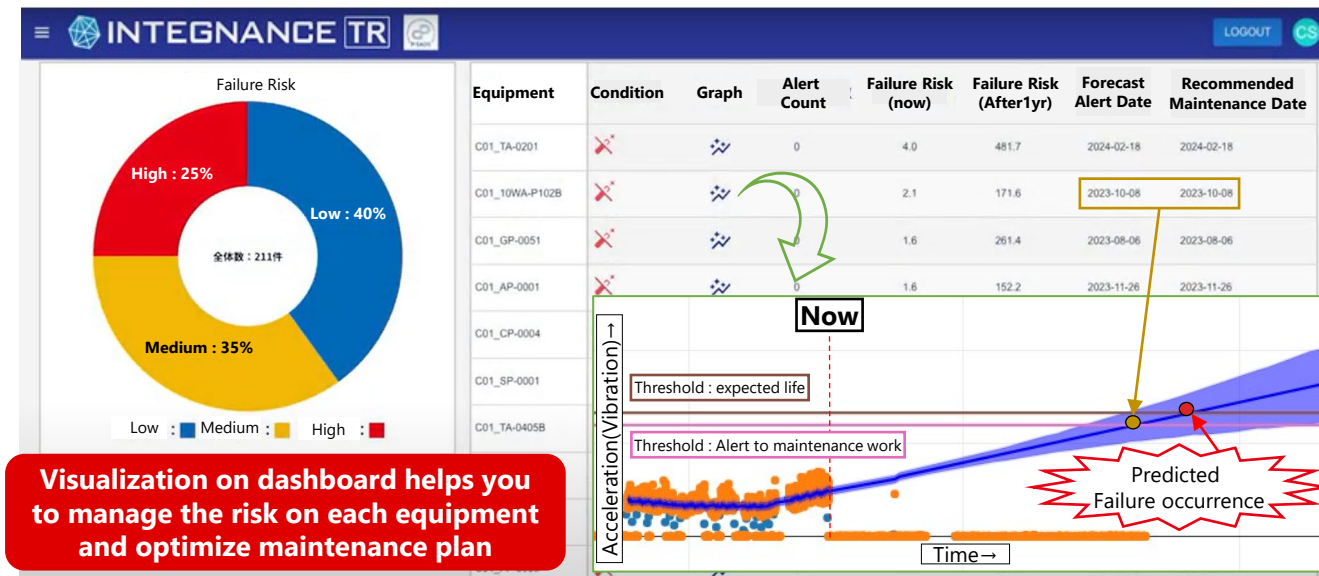
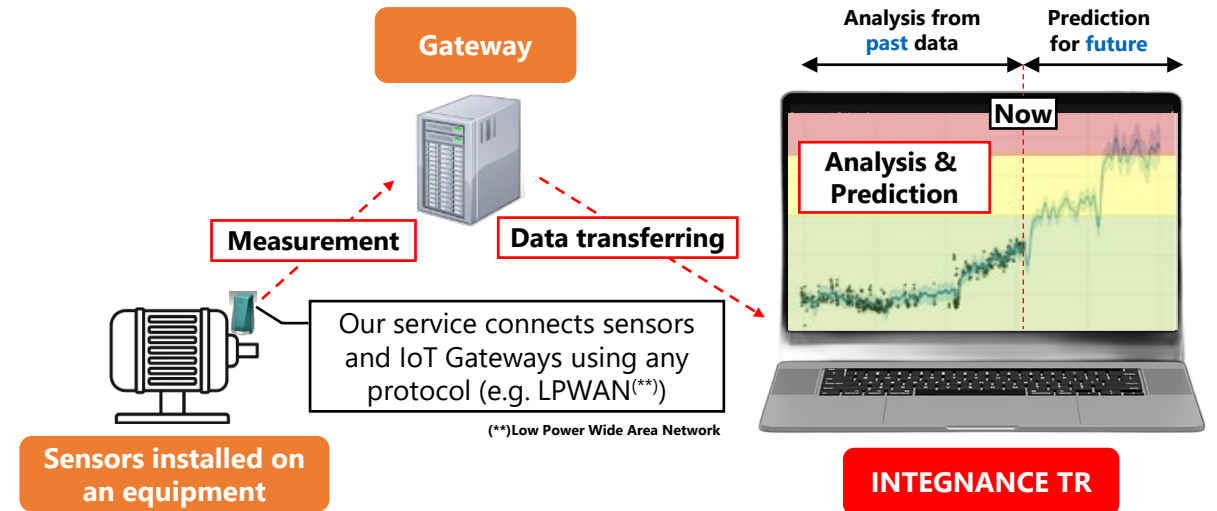
## Do you have any of these issues?

- Need to predict failure event to minimize production loss
- Need to optimize maintenance plan and cost for rotating machinery with/without existing sensors
- Struggling to accumulate maintenance knowledge

## What is INTEGNANCE TR<sup>(\*)</sup>

- **Web-Based Analysis Tool:**  
INTEGNANCE TR, one of JGC in-house software, analyzes and visualizes the predicted condition of rotating machines by modeling time series data from sensors (e.g., vibration, temperature).
- **One-Stop Service:**  
Provides comprehensive services, including the installation of sensors and gateway devices to connect equipment to the cloud, AI modeling, and cloud-based visualization, all with secure data transfer protocols.

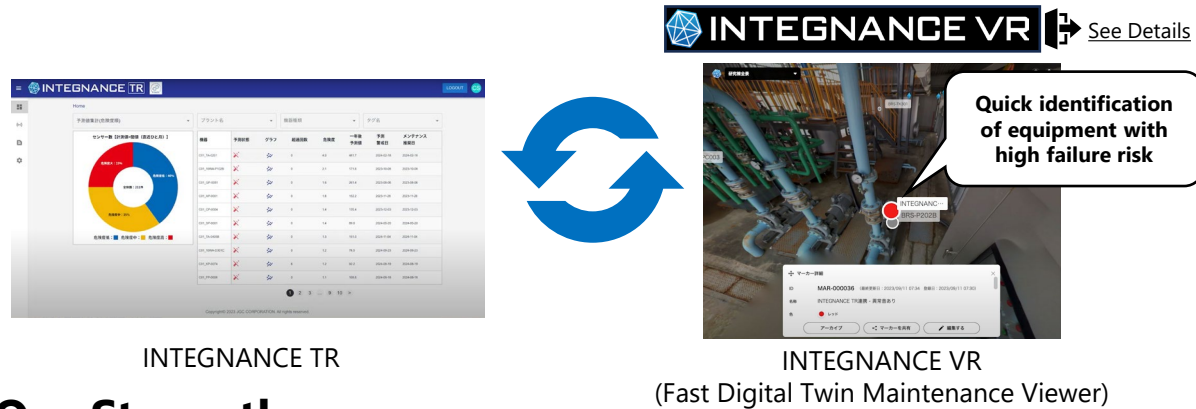
(\*)Time series regression forecast for Rotating machinery



# INTEGNANCE TR-Predicting Failure of Rotating Machinery

## Linkage to Virtual Reality

- **VR-Linked Monitoring**  
Track equipment failure risks with INTEGNANCE VR.
- **Quick Anomaly Response**  
Technical staff can quickly act on alarms and share equipment status and location.



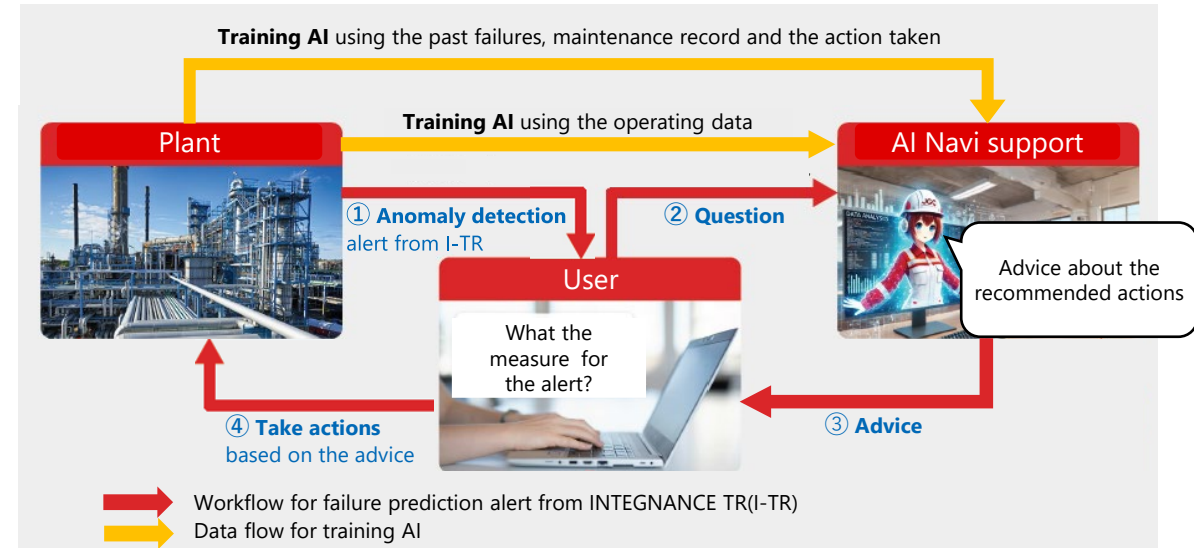
## Our Strengths

- **Customized AI Algorithms:**  
Leveraging extensive plant engineering expertise, we develop tailored AI algorithms for specific equipment and situations.
- **Flexible Integration:**  
Our system seamlessly connects with sensors from any vendor.
- **Cost-Effective:**  
We offer low implementation and licensing costs.

## Future Features of INTEGNANCE TR

- **AI Navi (\*) Integration:**  
Get advice based on past failures, actions taken, and operating data.
- **Prescriptive Maintenance:**  
Combining INTEGNANCE TR and AI Navi for proactive solutions.
- **Knowledge Standardization:**  
AI Navi captures and standardizes expert knowledge for sustainable transitions.

(\*)AI Navi is under development by JGC





# INTEGNANCE TR-Predicting Failure of Rotating Machinery

Return to  
Smart O&M  
Solutions menu

## Use Case : Failure Prediction in Oil Refineries

### Client: Japanese oil refinery

- Predictive maintenance for the rotating machinery in offsite area
- Approximately 300 rotating machinery (e.g., pump, mixer) without sensors monitoring its condition

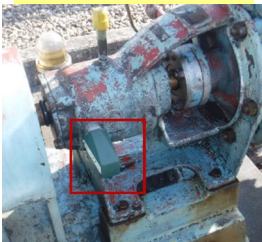
### Client benefit

- **Prevent Unexpected Shutdowns:**  
Timely maintenance prevents unexpected equipment failures.
- **Remote Monitoring:**  
Expanded from 300 to 800 rotating machines monitored remotely.
- **Reduced Maintenance Costs:**  
Optimize maintenance schedules to reduce costs.

## Pilot Implementation

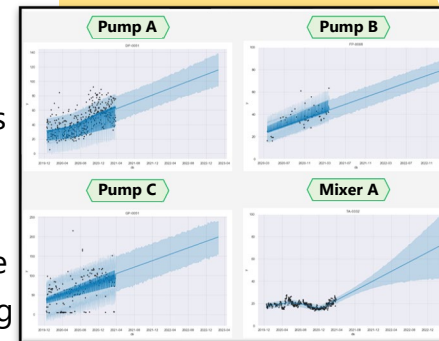
### Initial Setup

- **Vibration Monitoring:**  
Connected sensors to monitor vibration acceleration.
- **AI Model Development:**  
Developed and trained an AI model using past operating data.



### Validation of AI model

- **Trend Detection:**  
Identified increasing vibration acceleration trends in various types of rotating machineries
- **Condition Check:**  
Client inspections confirmed failure symptoms actually in these rotating machineries which trended to increase vibration



## Full-scale Operation

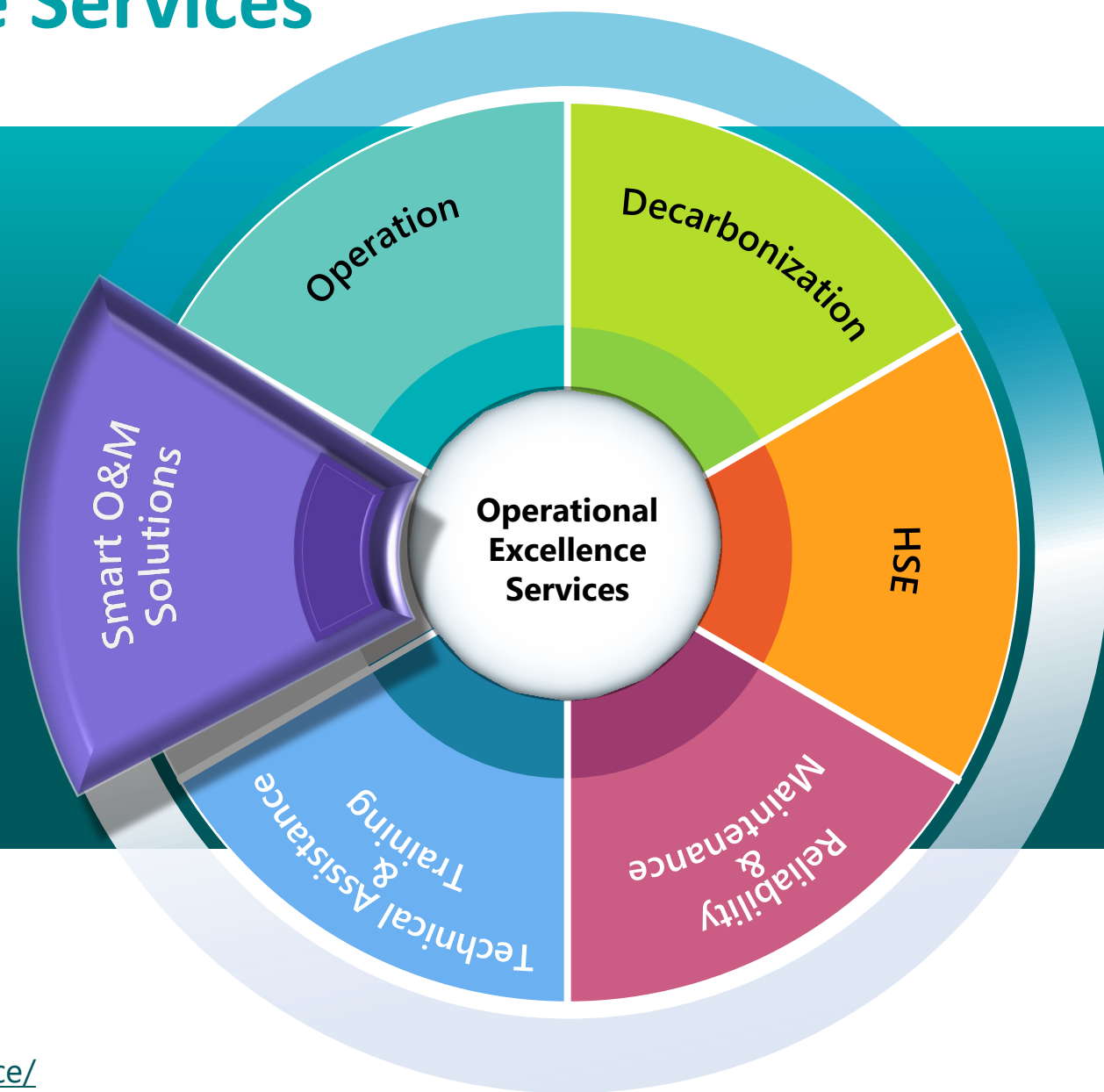
### Go Live and Roll Over

- **Go Live:**  
Full-scale operation of INTEGNANCE TR has been commenced.
- **Roll Over:**  
Expansion of INTEGNANCE TR in the Client's other 2 plant as well and monitored approximately 800 rotating machinery totally.



# Operational Excellence Services

## Smart O&M Solutions Plant Smartification with AI Technology



### Contact Us

 [Technology Inquiries | Contact Us | JGC HOLDINGS CORPORATION](#)

### Access to Our Homepage

 <https://www.jgc.com/en/business/epc/operation-maintanance/service/>

# Plant Smartification with AI Technology

## Do you have any of these issues?

- ☹ Lack of specific expertise for O&M improvement
- ☹ Decline in productivity due to plant aging
- ☹ Accumulated large amount of data but not being used
- ☹ Knowledge gained through the experience of senior O&M personnel is not shared well with other members of the team.

## Why choose an AI Solution with JGC

### Know your Process Design

Extensive achievement in process engineering for various types of EPC project

### Longstanding O&M Service

Our team has wide knowledge and experience in O&M service

### Multi-field Engineers

Our engineers can propose AI solution with multiple fields including process, pressure vessels, rotating equipment, static equipment, electrical, instrumentation, HSE, etc.



### Excellent AI experts

Extensive successful experience in providing AI solutions and well-developed implementation methodology.

### 30+ Cases

Prediction of catalyst degradation, Digital systemization of O&M, Equipment Failure Prediction System...etc.

### Various Types of Facilities

Oil Producing, Power Plant, LNG Plant, Chemical plant, Space station, Waste treatment plant...etc.



# Plant Smartification with AI Technology

## Our Solution



**Operation  
Visualization**

**Visualize plant operation data** to intuitively determine operating conditions



**Anomaly  
Detection**

**Quickly detect abnormalities and analyze causes** to prevent any unforeseen events and trouble



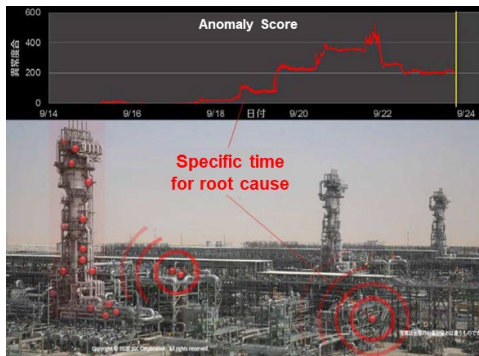
**Prediction of  
age-related  
deterioration.**

**Predicts age-related deterioration** of catalysts, solvents, etc., and suggests optimal replacement times.

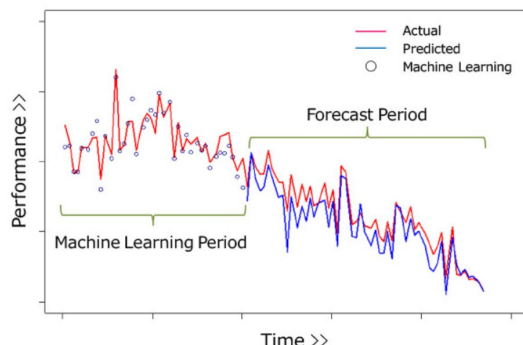


**Productivity  
Improvement**

**Incorporating external factor** such as climate data into operational data analysis to improve productivity



Trace the process determine the cause



Time-dependent catalyst deterioration

## Our Approach

**Workshop**

**Proposal**

**Contract**

**Mobilize  
Team and  
Engineer**

Discussions between client and JGC data analysis engineers (1.5-2 hours/workshop x 1 or more times as required).

- Identification of customer recognized and potential issues
- Planning of problem-solving measures
- Confirmation of quantity and quality of data required for data analysis

Offer the best methods such as:

- Report on cause investigation, etc.
- AI software (GUI of customer's choice)
- Automation system
- Image identification equipment
- Consultant for customer's AI construction and use

**AI Digital Solution**

# Case Study: Analysis equipment clogging factors in Chemical plant

[Return to  
Smart O&M  
Solutions menu](#)

## (1) Issue

- ☹️ **Equipment clogging occurs frequently**
- ☹️ To clean the clogging, the plant had to be shutdown and resulting in a **significant loss of production.**
- ☹️ Difficult to analyze **the large number of operating conditions** under which clogging occurs.

## (2) Our Solution

- Step-1** To develop AI model based on algorithms for LightGBM Classifier model to investigate operating conditions during clogging for the past 10 years
- Step-2** The model calculates clogging in real time during operation and extracts operational factors (e.g., sensor values) related to blockages sequentially.
- Step-3** Approximately 20 factors representing operating conditions that contribute to blockage were found. The top three factors were visualized as a three-dimensional plot. **(Fig. 1)**
- Step-4** The result allows engineers to properly analyze the elements causing the clogging and develop an efficient solution.

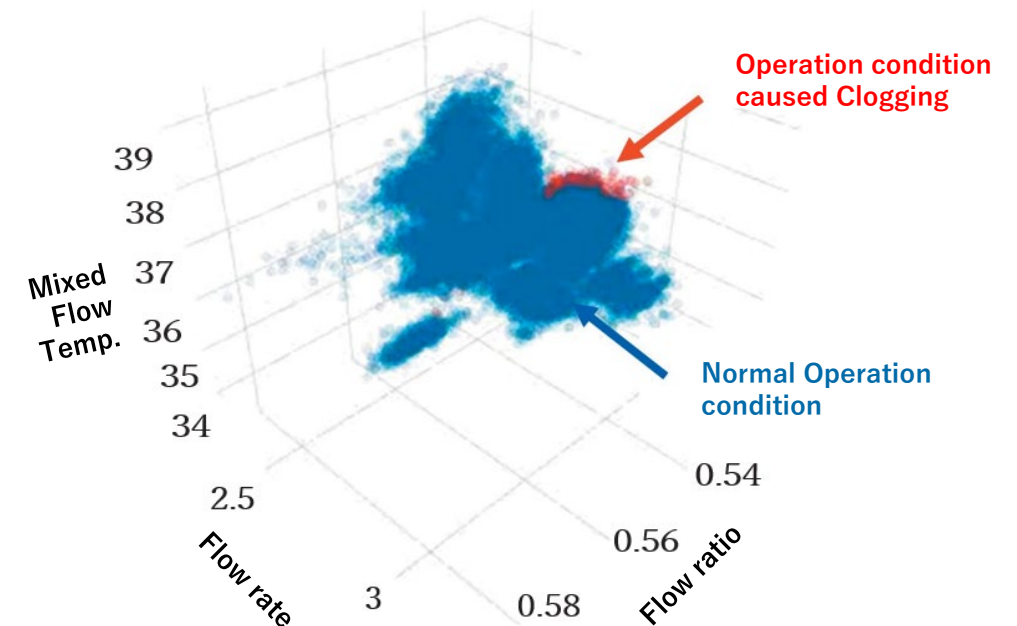


Fig.1 3D visualization of elements causing clogging

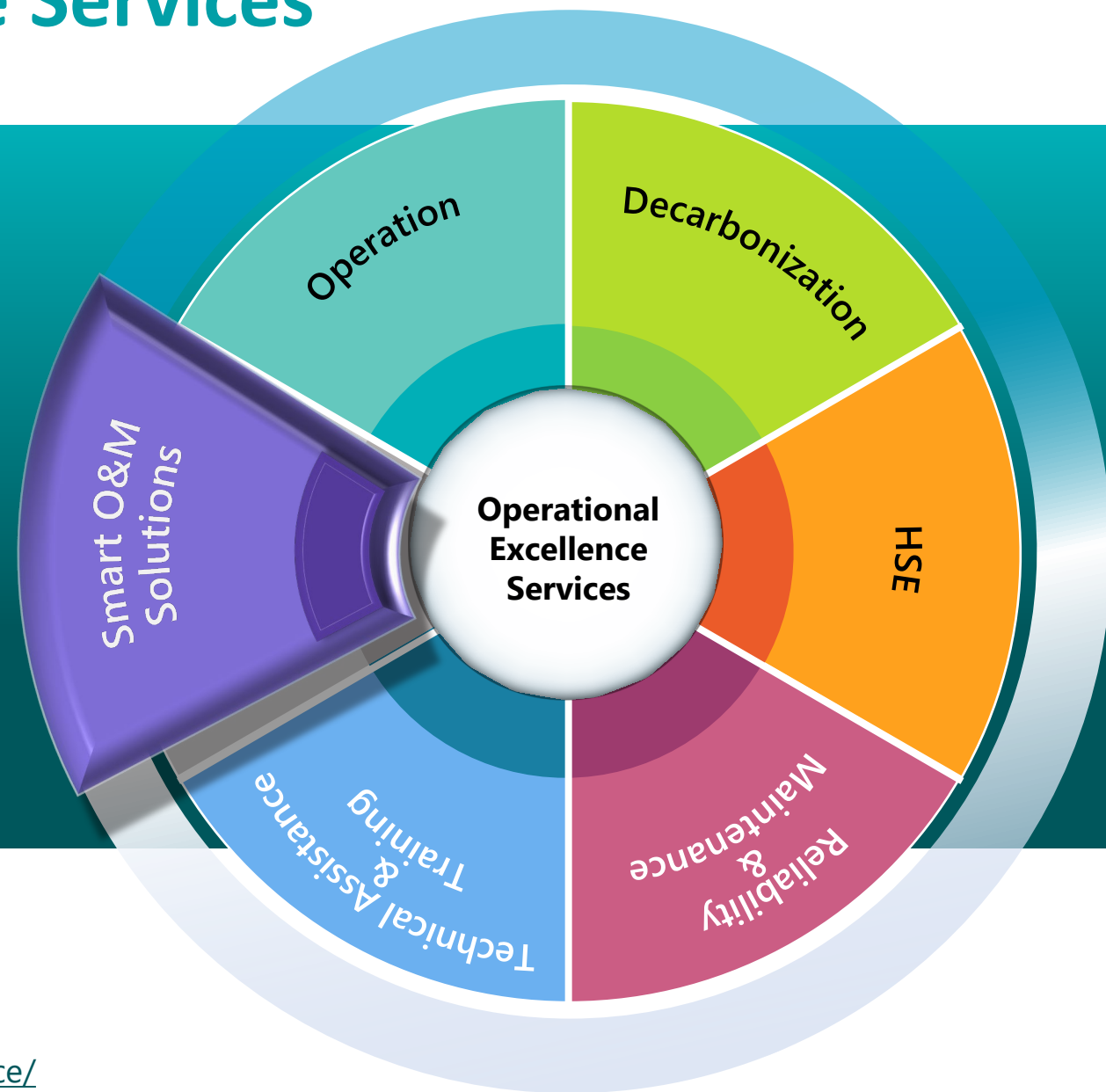
## (3) Client's Benefit

Improved productivity was achieved by operating to prevent clogging



# Operational Excellence Services

## Smart O&M Solutions Remote Monitoring and Assistance



### Contact Us

 [Technology Inquiries | Contact Us | JGC HOLDINGS CORPORATION](#)

### Access to Our Homepage

 <https://www.jgc.com/en/business/epc/operation-maintanance/service/>



# Remote Monitoring and Assistance

## Do you have any of these issues?

- ☹️ **Restricted number of persons for site access**
- ☹️ **Understanding operational status of remotely located plants**
- ☹️ **Identify improvement opportunities in operations**
- ☹️ **Problem-solving teams on technical troubles**
- ☹️ **Lack of experienced engineers & technicians**

## Our Solutions

- Remotely visualize the operations data or share the operations information with the remotely located plant site and our Global Operating Center and solve the problem with clients as “one team”.
- Without dispatching experts to the site, our expert team at Global Operating Center will support clients with troubleshooting.

Example of KPI Dashboards for remote operations monitoring

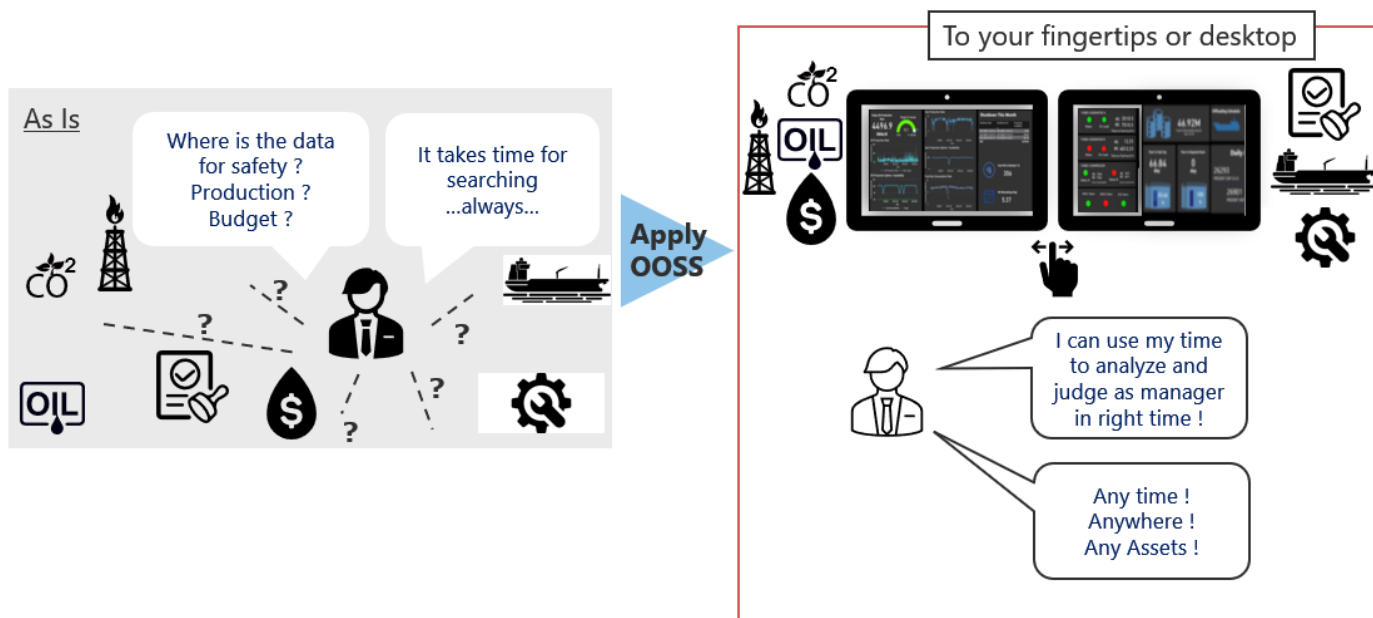


# Remote Monitoring and Assistance

[Return to  
Smart O&M  
Solution menu](#)

## Use Case Bringing scattered information to your fingertips

Significantly reduced time to spend for searching necessary information for managers for the right decision at the right time



## Our Strengths

- Data Visualization System to enable monitoring and analyzing the trouble with clients
- Specialized teams at Global Operating Center with expertise from various EPC and Operational Excellence services
- Availability of various experts who can solve problems quickly

## Our Experiences

**30+**

**Years in Global Market**

Middle East, North Africa  
Southeast Asia...etc

**Various  
Type of  
Facilities**

Gas Processing  
Oil Producing  
FPSO  
Integrated Water, Steam,  
Power Plant, etc.